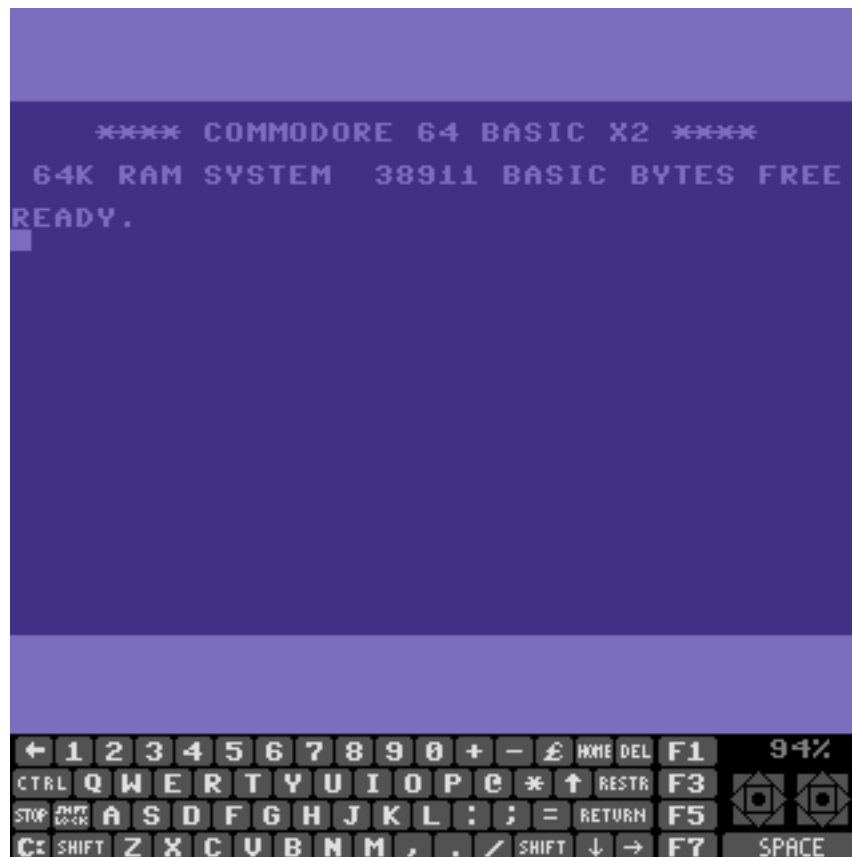


# Frodo for PalmOS User Manual



## Document history:

Version	Date	Author	Comment
1.0	16.01.2006	Thomas Borris	Document created, based on documents from Johan Forsberg and Christian Bauer
1.1	09.05.2007	Thomas Borris	Updated for version 4.1c final
1.2	09.05.2007	Thomas Borris	Updated for version 4.2 beta 1

**Table of content:**

1	Overview.....	1
2	Installation .....	1
2.1	Install .d64/.t64 .....	1
3	Menu Program.....	1
3.1	File manager .....	1
3.2	Save as new.....	1
3.3	Save to last .....	1
3.4	Load last.....	1
3.5	Pause .....	1
3.6	Reset.....	2
4	Menu Commands .....	2
4.1	Directory.....	2
4.2	Load/Run.....	2
4.3	Softreset.....	2
5	Menu Options .....	2
5.1	Swap joysticks.....	2
5.2	Switch emul. mode.....	2
5.3	Switch 1541 mode.....	2
5.4	Graphics and Sound .....	2
5.4.1	FPS (frames per second) .....	2
5.4.2	Turbo .....	2
5.4.3	Screen Mode .....	3
5.4.4	Vol.....	3
5.5	Joystick .....	3
5.5.1	Emulate joystick .....	3
5.5.2	Map directions and fire button to Palm keys .....	3
5.5.3	JoyPen.....	3
5.6	Keyboard.....	4
5.7	Obscure.....	4
5.7.1	Single cycle emulation.....	4
5.7.2	Sprites .....	4
5.7.3	Sprite collisions.....	4
5.7.4	Fast reset.....	5
5.7.5	CIA hack .....	5
5.7.6	Detailed 1541 emulation.....	5
5.7.7	Display track number.....	5
5.7.8	Write back to SD-Card .....	5
5.8	Colors .....	5

5.8.1	Preset .....	5
5.8.2	Modify color .....	5
5.9	Commands.....	5

## 1 Overview

**Frodo** is a freeware C64 emulator for BeOS, Unix, MacOS, AmigaOS, Win32, RiscOS systems and PalmOS.

Frodo comes in three flavors: the "normal" Frodo with a line-based emulation, the improved line-based emulation "Frodo PC", and the single-cycle emulation Frodo SC that is slower but far more compatible.

For PalmOS, only "normal" Frodo is available.

To reduce size and improve performance, following changes are done in PalmOS version:

- Only one disk drive instead of four
- Removed SAM
- Removed REU
- No support of host directories as disk drives

## 2 Installation

Install main application Frodo.prc to your Palm device using QuickInstall.

### 2.1 *Install .d64/.t64*

Use the supplied "Pippin" java program to create PDB-files with your .d64/.t64 images. It should run if you double-click the Pippin.bat batch file, or by just double-clicking Pippin.app in the MacOSX version. If all else fails, you can run it with "java -jar pippin.jar".

Pippin will display an "In" and an "Out" column. Drag files (.d64, .t64, zipped .d64/.t64 or entire directories) into the in area. Alternatively use the "Open" menu item. Files will be parsed, converted, and added to the output side. Converted? Yes, .d64 (disk images, 160 kB) that contain a sole file will be converted into .t64 (<60 kB).

Push the "Make pdb" button, or choose the corresponding menu item. Double-click the resulting .pdb to transfer it to your palm device.

You can also place .d64/.t64/.p00 files or PDBs created with Pippin to your expansion card to folder "/Palm/programs/Frodo/".

## 3 Menu Program

### 3.1 *File manager*

Open snapshot or select file for disk emulation. Files marked with "X" at the beginning are stored on SD-Card.

### 3.2 *Save as new*

Save snapshot to new file.

### 3.3 *Save to last*

Save snapshot to last used file.

### 3.4 *Load last*

Load last saved snapshot.

### 3.5 *Pause*

Pause entire emulation.

### 3.6 *Reset*

Reset C64.

## 4 Menu Commands

You can define up to five user defined C64 commands and assign them to this menu (see menu options -> commands).

### 4.1 *Directory*

Load and display directory of selected disk.

### 4.2 *Load/Run*

Load first program of selected disk and start it.

### 4.3 *Softreset*

Perform softreset on C64 (SYS64738).

## 5 Menu Options

### 5.1 *Swap joysticks*

If you have only one joystick selected in joystick option dialog, you can switch with this option, which C64 joystick is used.

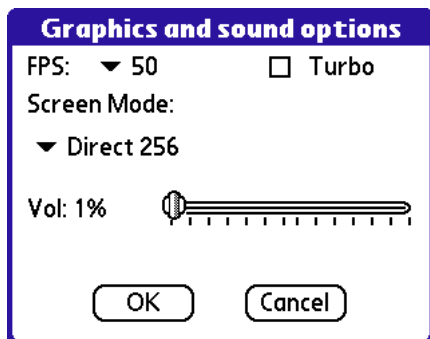
### 5.2 *Switch emul. mode*

Turn single cycle emulation on/off.

### 5.3 *Switch 1541 mode*

Turn detailed 1541 emulation on/off.

### 5.4 *Graphics and Sound*



#### 5.4.1 *FPS (frames per second)*

Select, how many frames drawn per second. 50 means every frame of C64 is drawn. If you select adaptive, Frodo tries to draw as many frames to run C64 at 100% of it's original speed.

#### 5.4.2 *Turbo*

Select turbo to run emulation as fast as possible.

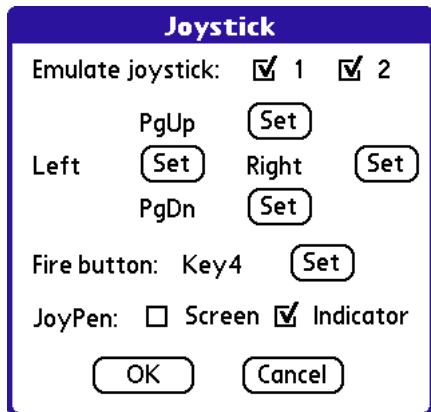
### 5.4.3 Screen Mode

- Direct 256: draw direct to graphics adapter
- Buffered 256: draw to bitmap and use API call to copy bitmap to graphics adapter (more compatible)

### 5.4.4 Vol

Select volume of sound (mute or 1% to 100%).

## 5.5 Joystick



### 5.5.1 Emulate joystick

Select, which joystick to emulate (1 and/or 2).

### 5.5.2 Map directions and fire button to Palm keys

Select „Set“ to open dialog for mapping of a Palm key to the direction or fire button.

### 5.5.3 JoyPen

Select area to use pen as a joystick.

- Screen: entire screen of Frodo
- Indicator: only joystick indicator

## 5.6 Keyboard

**Map Palm key to C64**

1 Unset	H Unset	Y Unset	F5 Unset
2 Unset	I Unset	Z Unset	F7 Unset
3 Unset	J Unset	← Unset	SPACE Unset
4 Unset	K Unset	+ Unset	HOME Unset
5 Unset	L Unset	- Unset	DEL Unset
6 Unset	M Unset	£ Unset	CTRL Unset
7 Unset	N Unset	© Unset	RSTO Unset
8 Unset	O Unset	* Unset	STOP Unset
9 Unset	P Unset	↑ Unset	SHIFT LOCK Unset
0 Unset	Q Unset	: Unset	RET Unset
A Unset	R Unset	; Unset	C: Unset
B Unset	S Unset	= Unset	LEFT SHIFT Unset
C Unset	T Unset	, Unset	RIGHT SHIFT Unset
D Unset	U Unset	. Unset	CUR DOWN Unset
E Unset	V Unset	/ Unset	CUR RIGHT Unset
F Unset	W Unset	F1 Unset	
G Unset	X Unset	F3 Unset	

OK

Select C64 key to open dialog for mapping a Palm key to the specified C64 key.

## 5.7 Obscure

**Obscure options**

☐ Single cycle emulation

☒ Sprites    ☒ Sprite collisions

☐ Fast reset    ☐ CIA hack

☐ Detailed 1541 emulation

☐ Display track number

Write back to SD-Card: ▼ Never

OK    Cancel

### 5.7.1 Single cycle emulation

Switch between single cycle emulation and standard emulation.

### 5.7.2 Sprites

Switch the display of sprites on and off. Turning them off speeds up the emulation a little when there are a lot of sprites on the screen.

### 5.7.3 Sprite collisions

Determines whether collisions between sprites and between sprites and graphics should be detected. Turning off collisions will make you invincible in some games (sadly, your enemies are likely to become invincible, too) .

#### 5.7.4 *Fast reset*

You can disable the memory test, that is normally performed by the C64 on a reset. Under emulation, the memory test is not necessary and the reset becomes much faster when it is disabled.

#### 5.7.5 *CIA hack*

This hack is necessary to make some programs (such as the games "Gyruss" and "Motos") run that would otherwise hang in an endless interrupt loop because they use an unusual technique to acknowledge CIA interrupts (sometimes even without the programmer knowing it). It should normally be turned off.

#### 5.7.6 *Detailed 1541 emulation*

If you turns this emulation on, only .d64 files allowed to use, but Frodo emulates the 1541 processor and is compatible with about 50% of all fast loaders. However, it slows down the emulation considerably. If you have a .d64 with a program that doesn't load with the normal emulation, you may have better luck with the 1541 processor emulation instead.

Writing to disks is only possible, if detailed 1541 emulation is turned on.

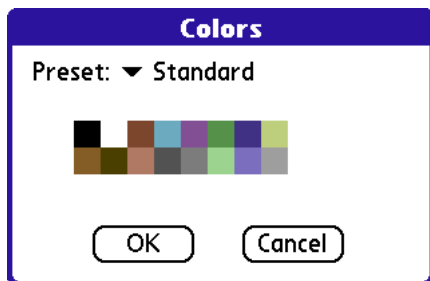
#### 5.7.7 *Display track number*

If detailed 1541 emulation is turned on, this option displays the current track number instead of the performance information.

#### 5.7.8 *Write back to SD-Card*

If you use a .d64 file in detailed 1541 emulation mode from SD-Card, a copy of this file is used in main memory. You can choose with this setting, if Frodo should write back the file to your SD-Card on exit or when you select a different .d64 file.

### 5.8 *Colors*



#### 5.8.1 *Preset*

Select a predefined set of C64 colors.

#### 5.8.2 *Modify color*

Tap on a color to open dialog to change the color.

### 5.9 *Commands*

With this option, you can edit the user defined commands available in the menu Commands.